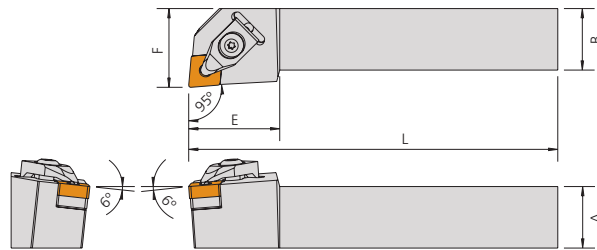
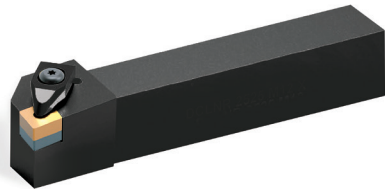


Combination Set

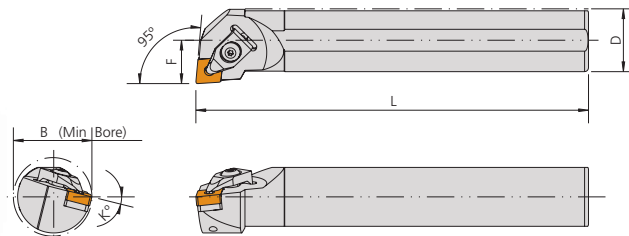
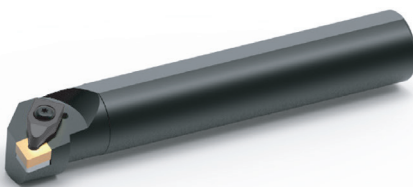
Turning Tool or Internal Boring Bar + 10 Inserts

External Turning Tools



EDP	Part Number	Insert	Dimensions					Set Price
			A	B	L	E	F	
FE1035	DCLNR-2020-K12 SET-1	CNMG1204	20	20	125	32	25	£55.00
FE1036	DCLNR-2525-M12 SET-1	CNMG1204	25	25	150	32	32	£55.00
FE1041	DWLNR-2020-K08 SET-1	WNMG0804	20	20	125	32	25	£55.00
FE1042	DWLNR-2525-M08 SET-1	WNMG0804	25	25	150	32	32	£55.00
FE1037	DDJNR-2020-K15 SET-1	DNMG1506	20	20	125	38	25	£66.00
FE1038	DDJNR-2525-M15 SET-1	DNMG1506	25	25	150	38	32	£66.00
FE1040	DTJNR-2525-M16 SET-1	TNMG1604	25	25	150	28	32	£55.00
FE1039	DSSNR-2525-M12 SET-1	SNMG1204	25	25	150	34	32	£55.00

Internal Boring Bars



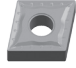


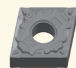
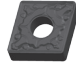
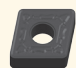




EDP	Part Number	Insert	Dimensions					Set Price
			D	F	L	B	K°	
FE1043	S08K-SCLCR-06 SET-1	CCMT0602	8	7	125	10	13°	£37.00
FE1044	S10K-SCLCR-06 SET-1	CCMT0602	10	5.5	125	13	12°	£37.00
FE1046	S12M-SCLCR-09 SET-1	CCMT09T3	12	9	150	16	12°	£43.00
FE1048	S16Q-SCLCR-09 SET-1	CCMT09T3	16	11	180	20	10°	£43.00
FE1050	S20R-SCLCR-09 SET-1	CCMT09T3	20	13	200	25	8°	£43.00
FE1053	S25S-SCLCR-09 SET-1	CCMT09T3	25	17	250	31	6°	£47.00
FE1045	S10K-SDUCR-07 SET-1	DCMT0702	10	8	125	15	10°	£37.00
FE1047	S12M-SDUCR-07 SET-1	DCMT0702	12	9	150	17	8°	£43.00
FE1049	S16Q-SDUCR-07 SET-1	DCMT0702	16	11	180	22	6°	£43.00
FE1051	S20R-SDUCR-11 SET-1	DCMT11T3	20	13	200	25	6°	£43.00
FE1054	S25S-SDUCR-11 SET-1	DCMT11T3	25	17	250	32	4°	£47.00
FE1052	S25S-DCLNR-12 SET-1	CNMG1204	25	20	250	32	12°	£59.00
FE1055	S32T-DCLNR-12 SET-1	CNMG1204	32	25	300	40	17°	£69.00
FE1056	S40T-DCLNR-12 SET-1	CNMG1204	40	32	300	50	15°	£89.00

NOTE: Please select radius, chipbreaker and grade for your application

Turning Inserts

Geometry / Grade Selection

Workpiece material	Geometry		Application range		Working Condition			
					Finishing	Continuous	Light Interrupted	Interrupted
P		QF	0.08-0.35	0.3-2.0	FP1005/ FP1015	FP1005/FP1015/ FP90TF/FP90TM	FP1015/FP1020/ FP1125/FP90TM	FP1020/FP1125
		QM	0.15-0.4	1.0-4.0	-	FP1005/FP1015/ FP90TF/FP90TM	FP1015/FP1020/ FP1125/FP90TM	FP1020/FP1125
		TP	0.05-0.3	0.5-3.0	FP90TF	FP30TM/FP90TM	FP90TM	-
		QR	0.25-0.6	2.0-6.5	-	FP1005/FP1015	FP1125	FP1035
		QH	0.18-1.1	3.0-12.0	-	FP1005/FP1015	FP1125	FP1035
M		SF	0.05-0.3	0.5-2.0	FS3015	-	-	-
		LM	0.08-0.4	0.8-3.5	-	FM1015/FM3115	FM1025/FM3115	-
		LR	0.15-0.5	1.5-5.0	-	FM1015	FM1025/FM3115	FM3125
K		UK	0.1-0.4	0.5-3.5	FK1015	FK1015	FK1015/FK1020	FK1025/FK1030
		HK	0.15-0.6	1.0-5.5	-	FK1015	FK1015/FK1020	FK1025/FK1030
		Flat	0.25-0.65	2.5-6.5	-	FK1015	FK1015/FK1020	FK1025/FK1030